



## Adelaide 21

### HOUSE & LAND PACKAGE



Address **Lot No:35**  
**Address: ass Flat**  
**Lot Size: 512m2**

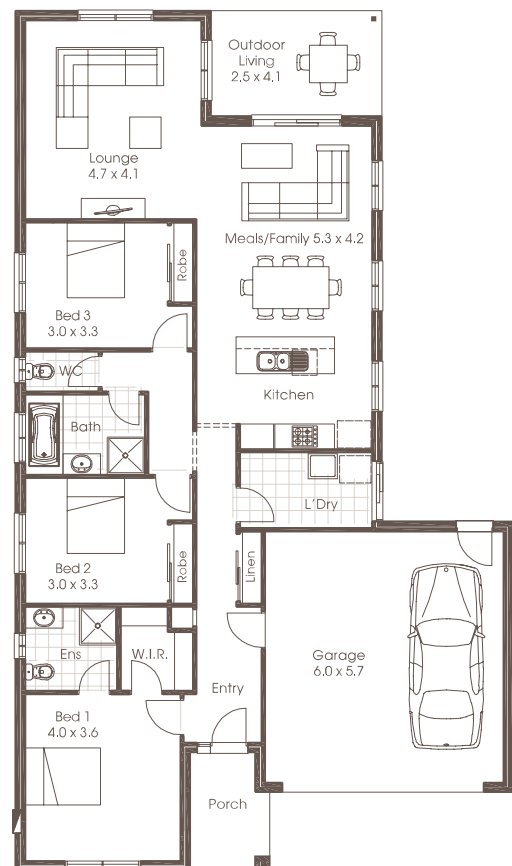
Price **\$375,745.00 Fixed**

- FIXED SITE COSTS
- Lifestyle Inclusions with Standard Facade
- Colorbond or Concrete Roof Tiles
- 35m2 plain concrete paving
- 3 Coat Paint System
- Westinghouse Electric Oven, Gas Cooktop, rangehood & Dishwasher
- Sectional Panel Lift garage door with Motor and Remotes
- Up to 1200mm Laminated base cupboards to Laundry
- Laminated overhead Cupboards to Kitchen
- Floor Coverings Throughout
- Flyscreens to all openable Windows & Sliding Doors
- Tiled in-situ shower bases
- Gas Ducted Heating & Evaporative Cooling
- Bricks above all windows, sliding doors & garage

For Further Information

**Cavalier Homes Bendigo**

Lisa Nankervis: 0448 177 483



Each office is independently owned and operated, Room sizes shown are approximate only, please refer to final working drawings for actual sizes, Plans are protected by copyright, Prices, inclusions and plans are subject to variation without notice. Display/show home designs and inclusions vary throughout Australia and New Zealand and are provided as a guide only. Please refer to your building contract for the specific design and inclusion details of your new home. \*Conditions Apply. Contact us for all information regarding the inclusions. Site allowances subject to soil reports & Engineering report. This information sheet is a guide only.

Cavalier Homes Registered Builders in Albury-Wodonga CDB-U 48509 (VIC) 184744C (NSW), Bendigo CDB-U 50034, Greater Western Sydney 332118C, Goulburn Valley CDB-U 51879 (VIC) 316535C (NSW), Goldfields CDB-U 58723, Melbourne West CDB-M 49760, North Coast 209455C, Wagga Wagga 196616C.